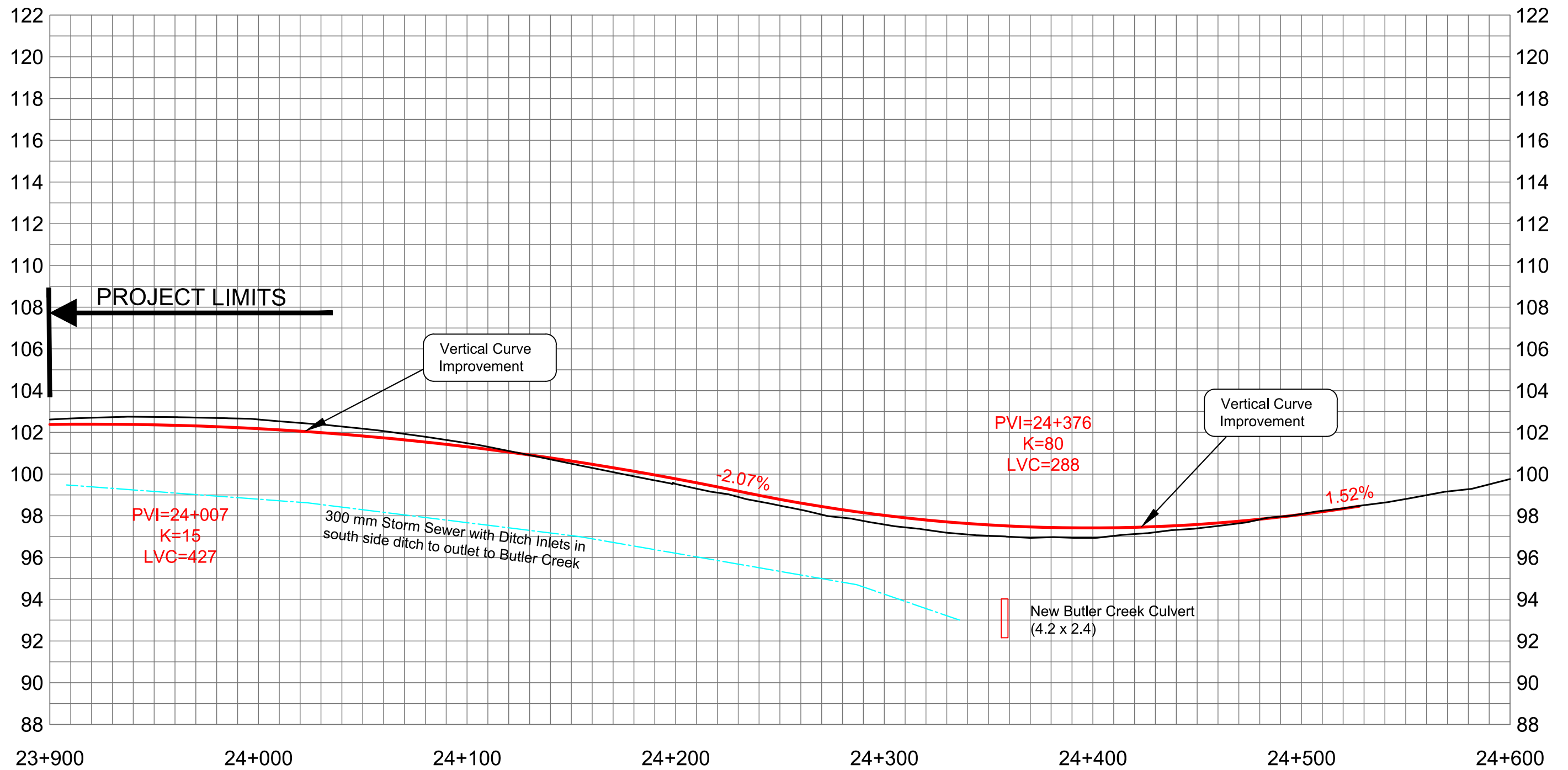


**APPENDIX A:
Recommended Plan**





SHEET
1

Recommended Profile

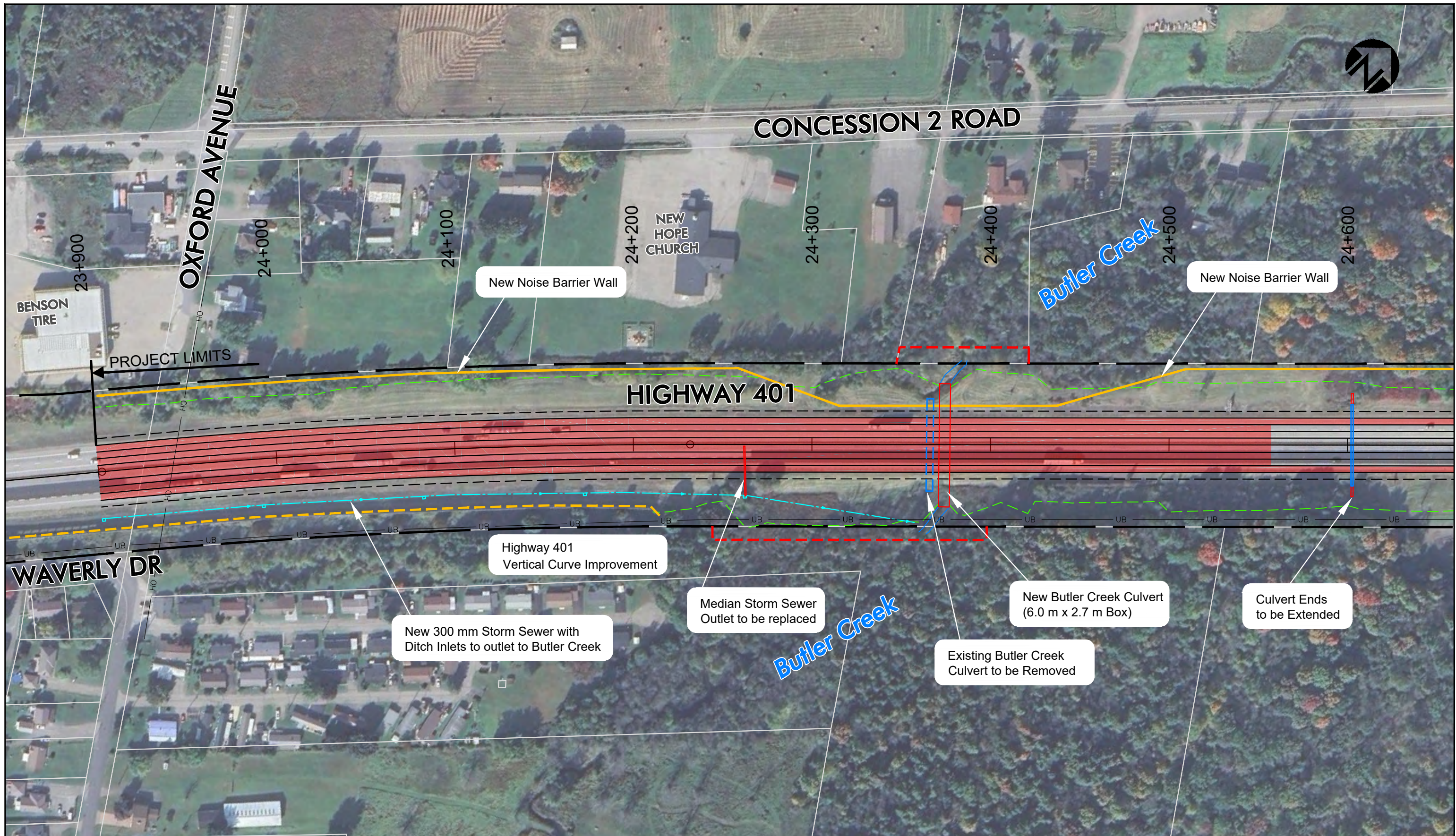
Highway 401
Sta 23+900 to Sta 24+600
Elizabethtown-Kitley Township

HIGHWAY 401 PLANNING STUDY, EAST OF BROCKVILLE

from 0.75 km east of North Augusta Rd Interchange
to 3.3 km west of Maitland Rd Interchange
Preliminary Design & Class Environmental Assessment
GWP 4111-22-00

SCALE 1:2000





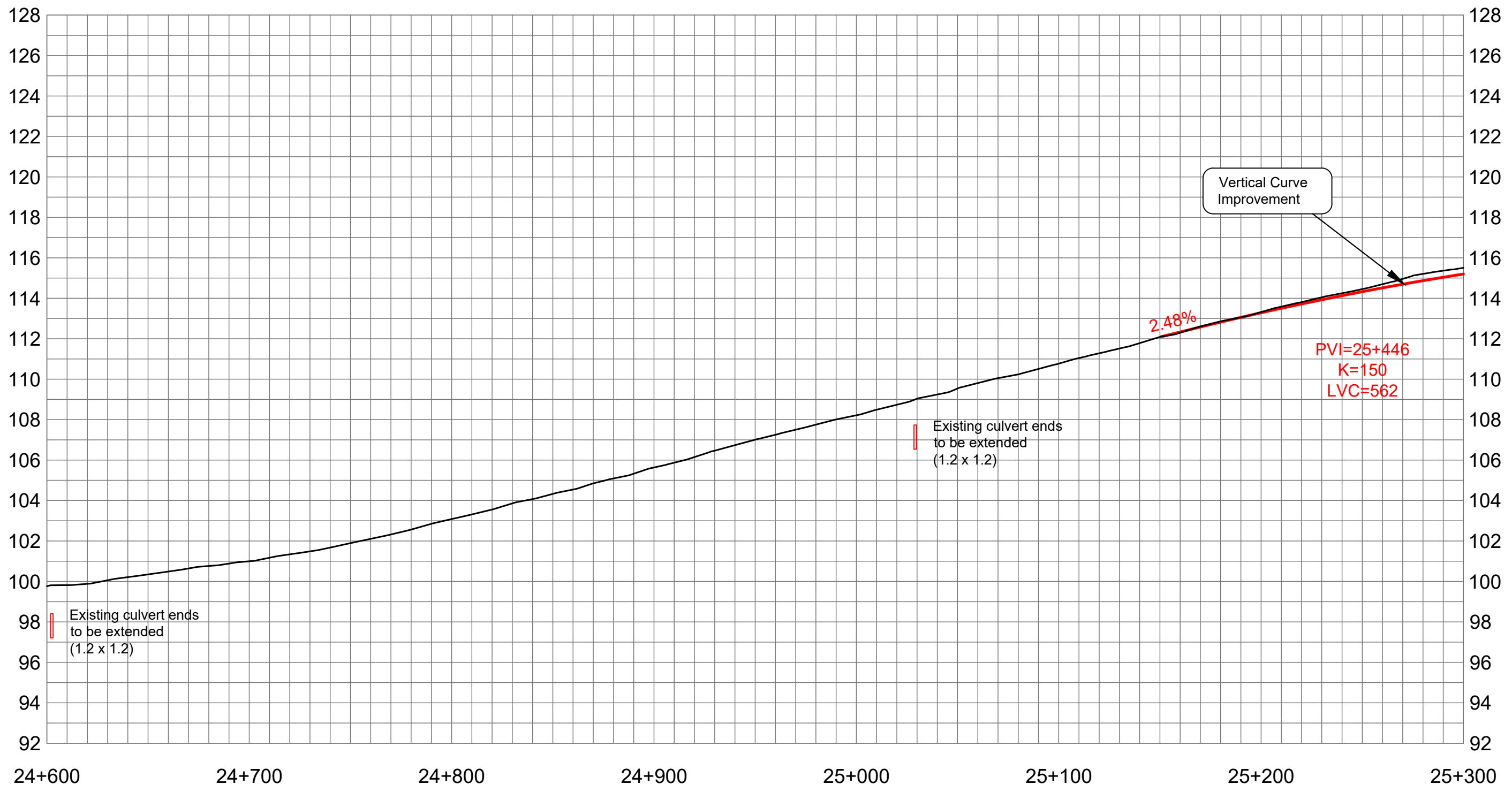
HIGHWAY 401 PLANNING STUDY, EAST OF BROCKVILLE
 from 0.75 km east of North Augusta Rd Interchange
 to 3.3 km west of Maitland Rd Interchange
 Preliminary Design & Class Environmental Assessment
 GWP 4111-22-00

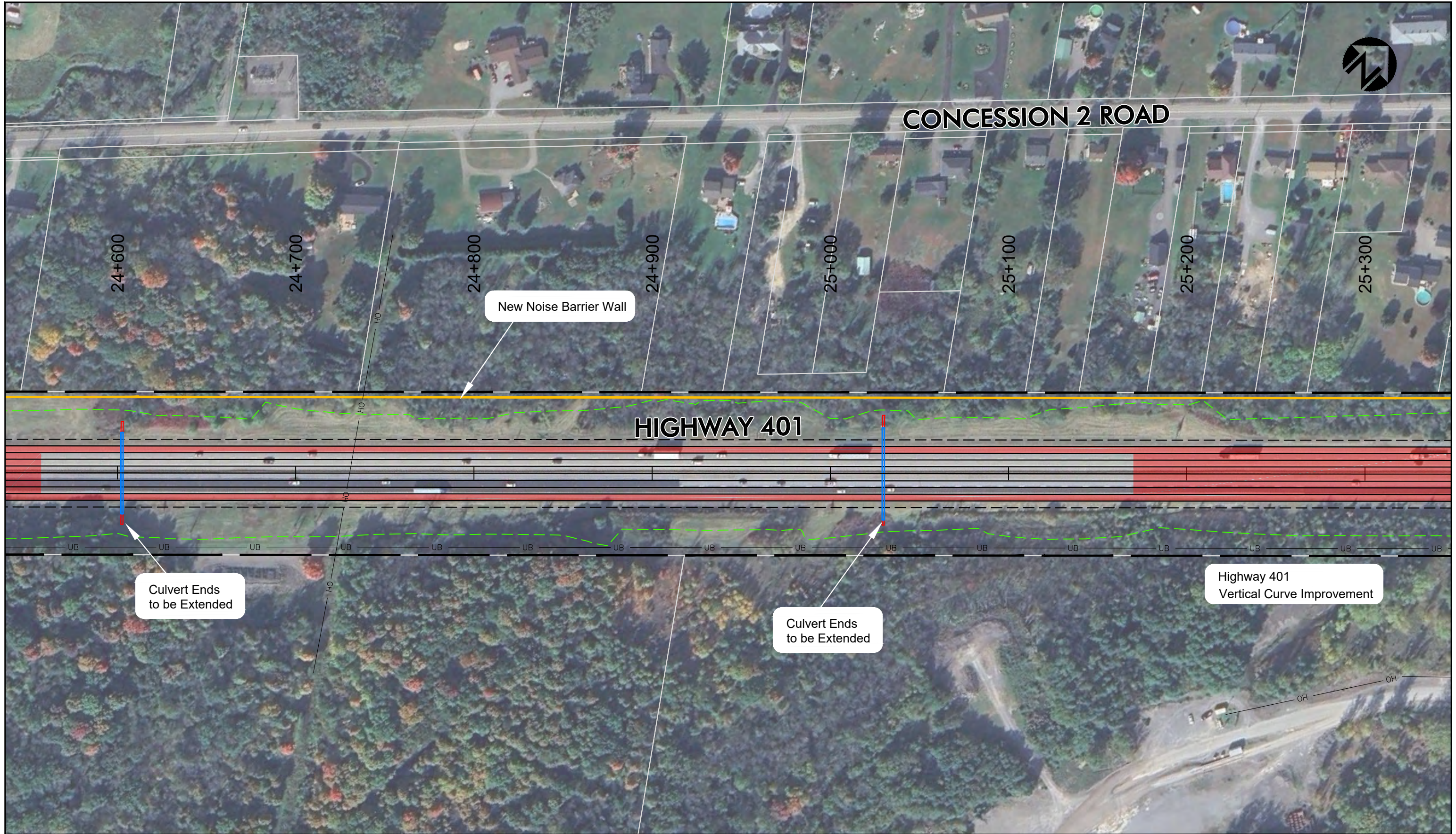


SCALE 1:2000

Recommended Plan
 Highway 401
 Sta 23+900 to Sta 24+600
 Elizabethtown-Kitley Township

SHEET
2



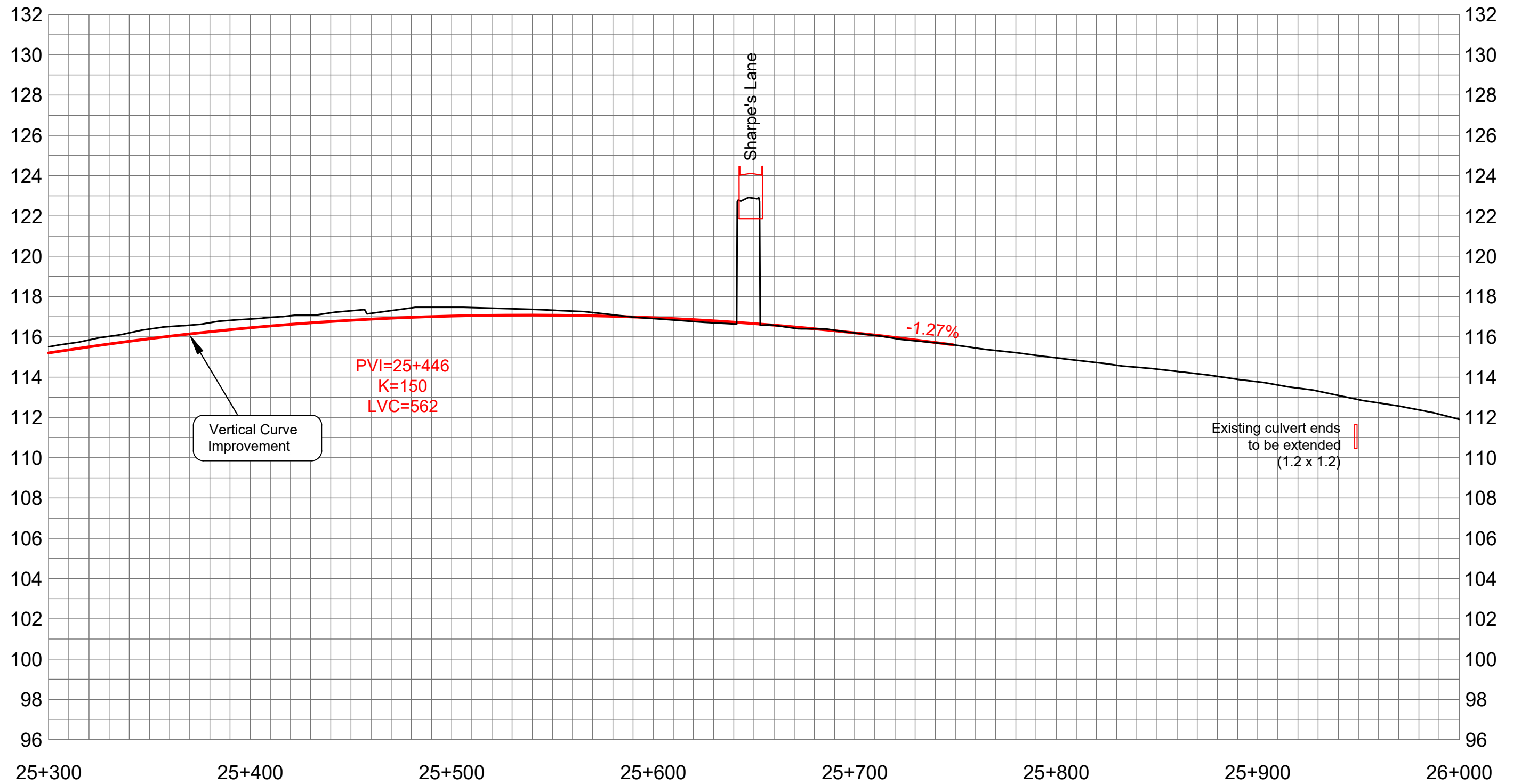


HIGHWAY 401 PLANNING STUDY, EAST OF BROCKVILLE
 from 0.75 km east of North Augusta Rd Interchange
 to 3.3 km west of Maitland Rd Interchange
 Preliminary Design & Class Environmental Assessment
 GWP 4111-22-00

SCALE 1:2000

Recommended Plan
 Highway 401
 Sta 24+600 to Sta 25+300
 Elizabethtown-Kitley Township

SHEET
4



SHEET
5

Recommended Profile

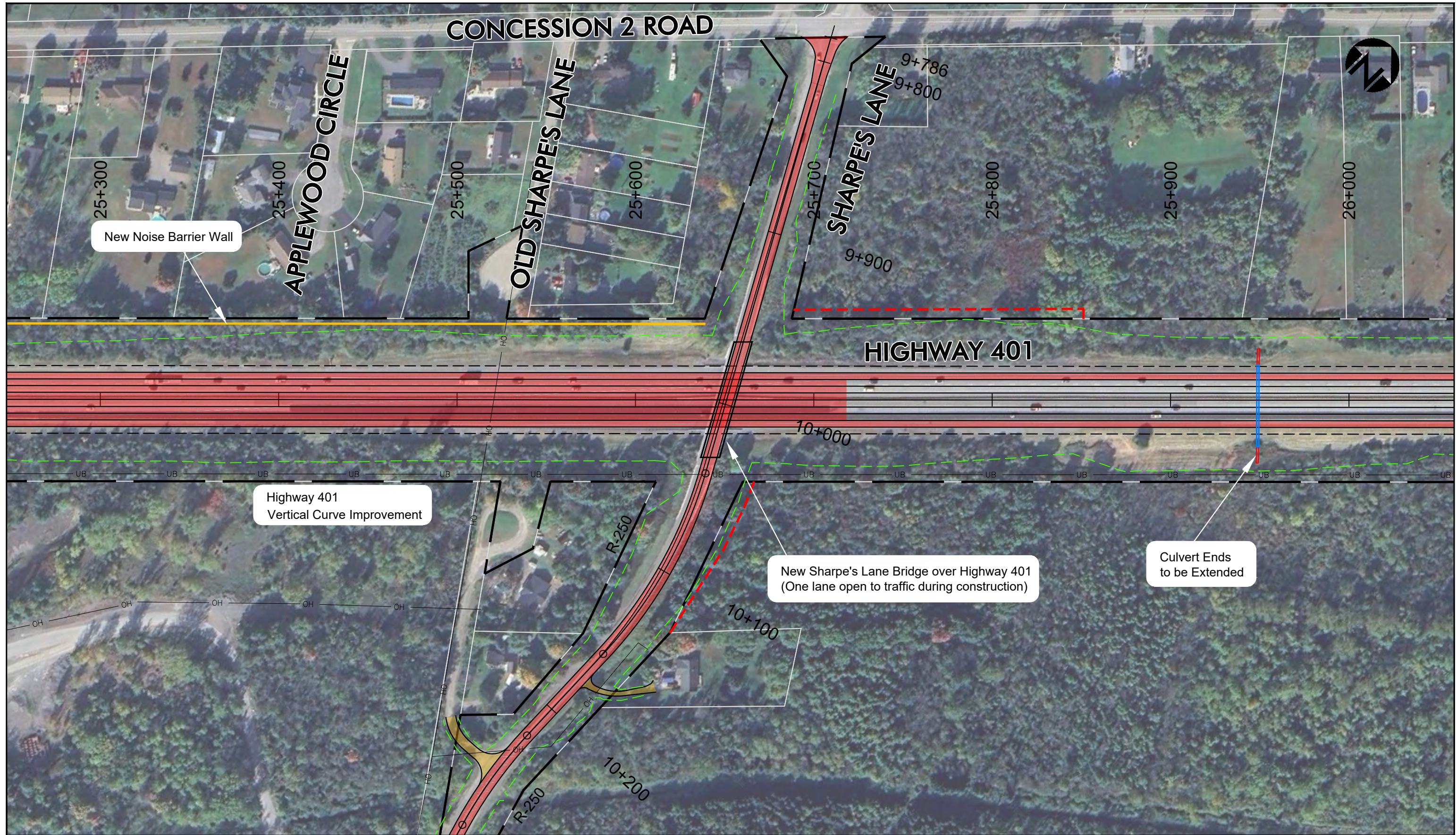
Highway 401
Sta 25+300 to Sta 26+000
Elizabethtown-Kitley Township

HIGHWAY 401 PLANNING STUDY, EAST OF BROCKVILLE

from 0.75 km east of North Augusta Rd Interchange
to 3.3 km west of Maitland Rd Interchange
Preliminary Design & Class Environmental Assessment
GWP 4111-22-00

SCALE 1:2000





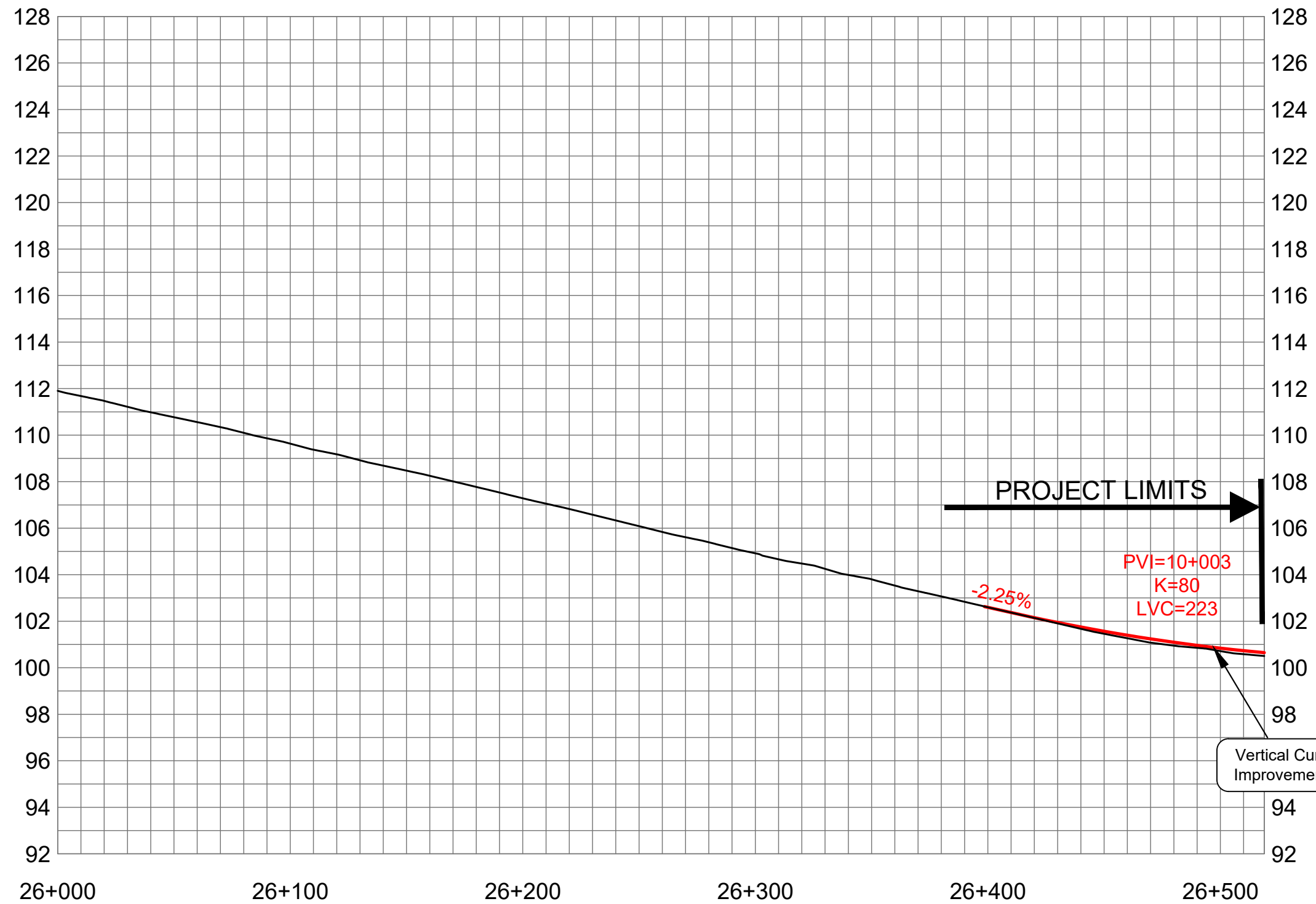
HIGHWAY 401 PLANNING STUDY, EAST OF BROCKVILLE
 from 0.75 km east of North Augusta Rd Interchange
 to 3.3 km west of Maitland Rd Interchange
 Preliminary Design & Class Environmental Assessment
 GWP 4111-22-00



SCALE 1:2000

Recommended Plan
 Highway 401
 Sta 25+300 to Sta 26+000
 Elizabethtown-Kitley Township

SHEET
6



SHEET
7

Recommended Profile

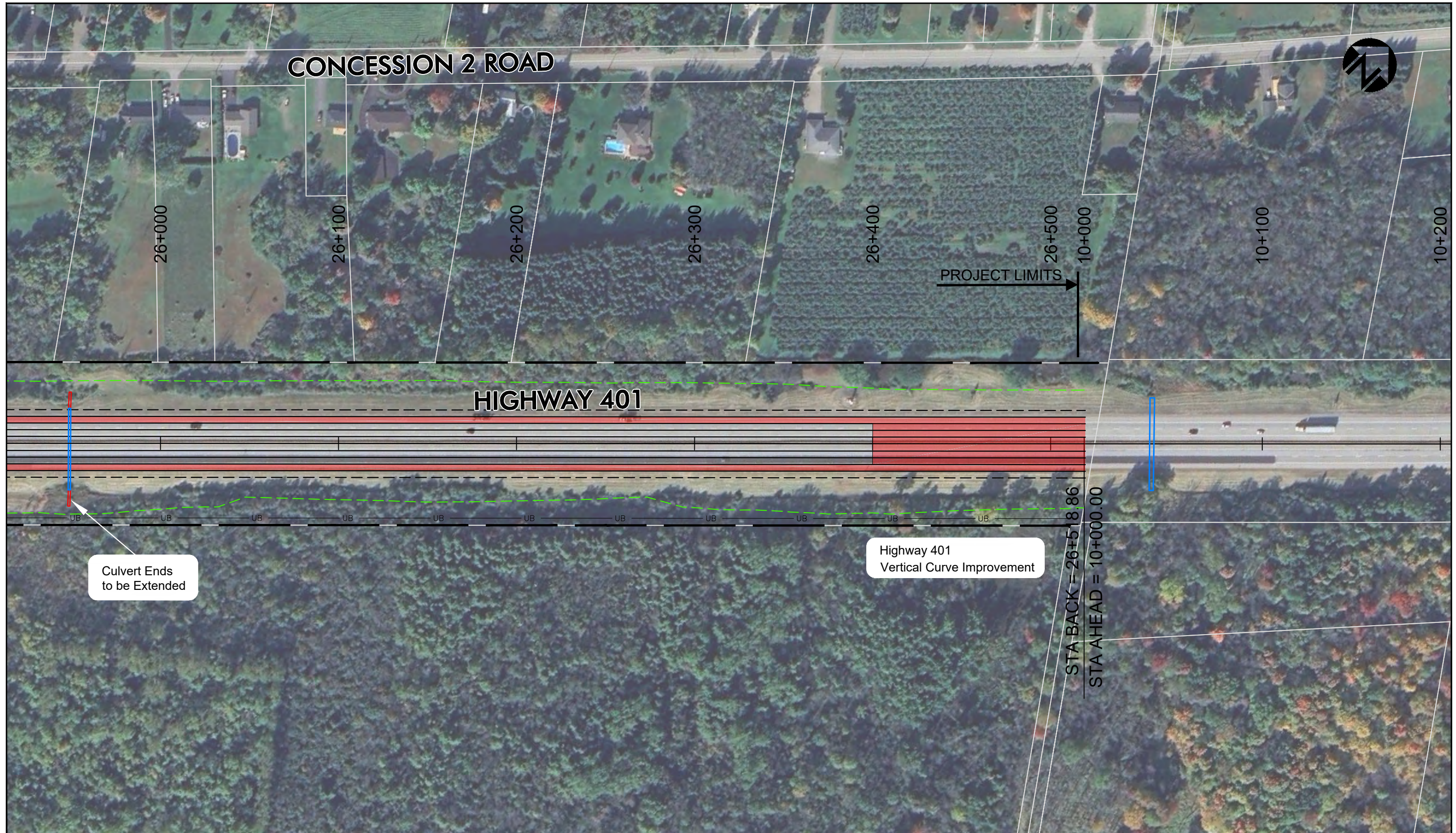
Highway 401
Sta 26+000 to Sta 26+519
Elizabethtown-Kitley Township

HIGHWAY 401 PLANNING STUDY, EAST OF BROCKVILLE

from 0.75 km east of North Augusta Rd Interchange
to 3.3 km west of Maitland Rd Interchange
Preliminary Design & Class Environmental Assessment
GWP 4111-22-00

SCALE 1:2000





CONCESSION 2 ROAD

26+000

26+100

26+200

26+300

26+400

26+500

10+000

10+100

10+200

PROJECT LIMITS

HIGHWAY 401

Culvert Ends to be Extended

Highway 401 Vertical Curve Improvement

STA BACK = 26+518.86

STA AHEAD = 10+000.00

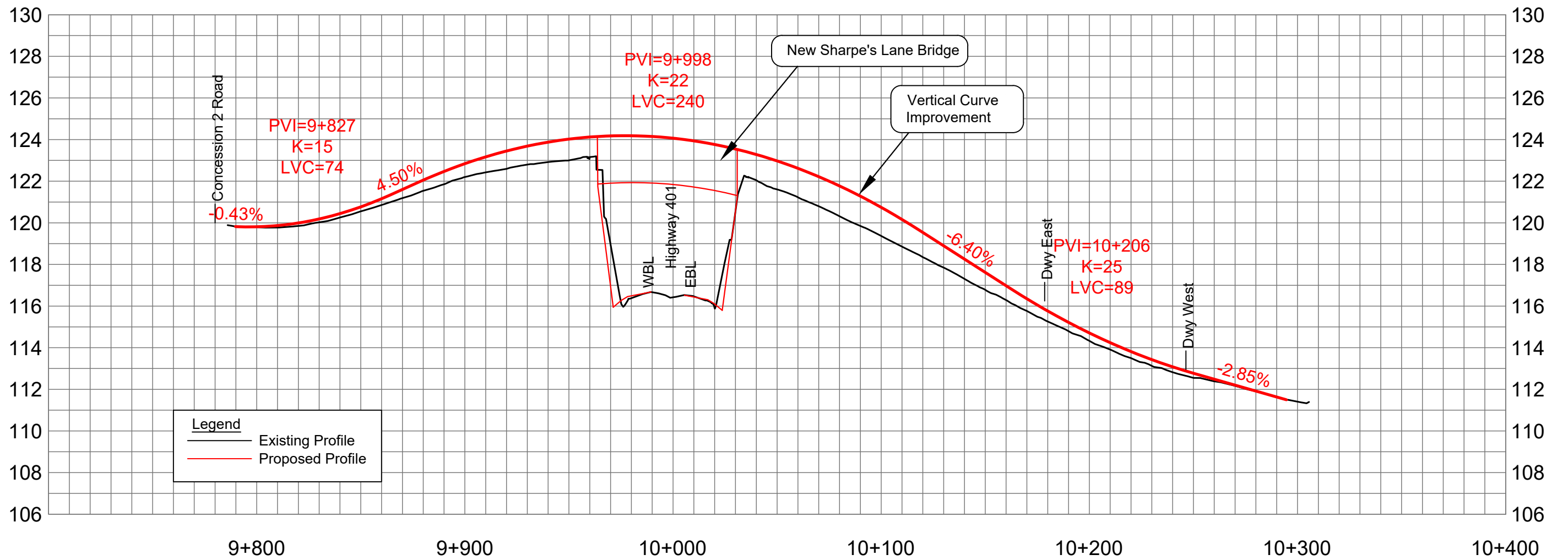


HIGHWAY 401 PLANNING STUDY, EAST OF BROCKVILLE
 from 0.75 km east of North Augusta Rd Interchange
 to 3.3 km west of Maitland Rd Interchange
 Preliminary Design & Class Environmental Assessment
 GWP 4111-22-00

SCALE 1:2000

Recommended Plan
 Highway 401
 Sta 26+000 to Sta 26+519
 Elizabethtown-Kitley Township

SHEET 8





New Sharpe's Lane Bridge over Highway 401
(One lane open to traffic during construction)

HIGHWAY 401 PLANNING STUDY, EAST OF BROCKVILLE
 from 0.75 km east of North Augusta Rd Interchange
 to 3.3 km west of Maitland Rd Interchange
 Preliminary Design & Class Environmental Assessment
 GWP 4111-22-00



SCALE 1:2000

Recommended Plan SHEET 10
 Sharpe's Lane
 Sta 9+786 to Sta 10+314
 Elizabethtwon-Kitley Township